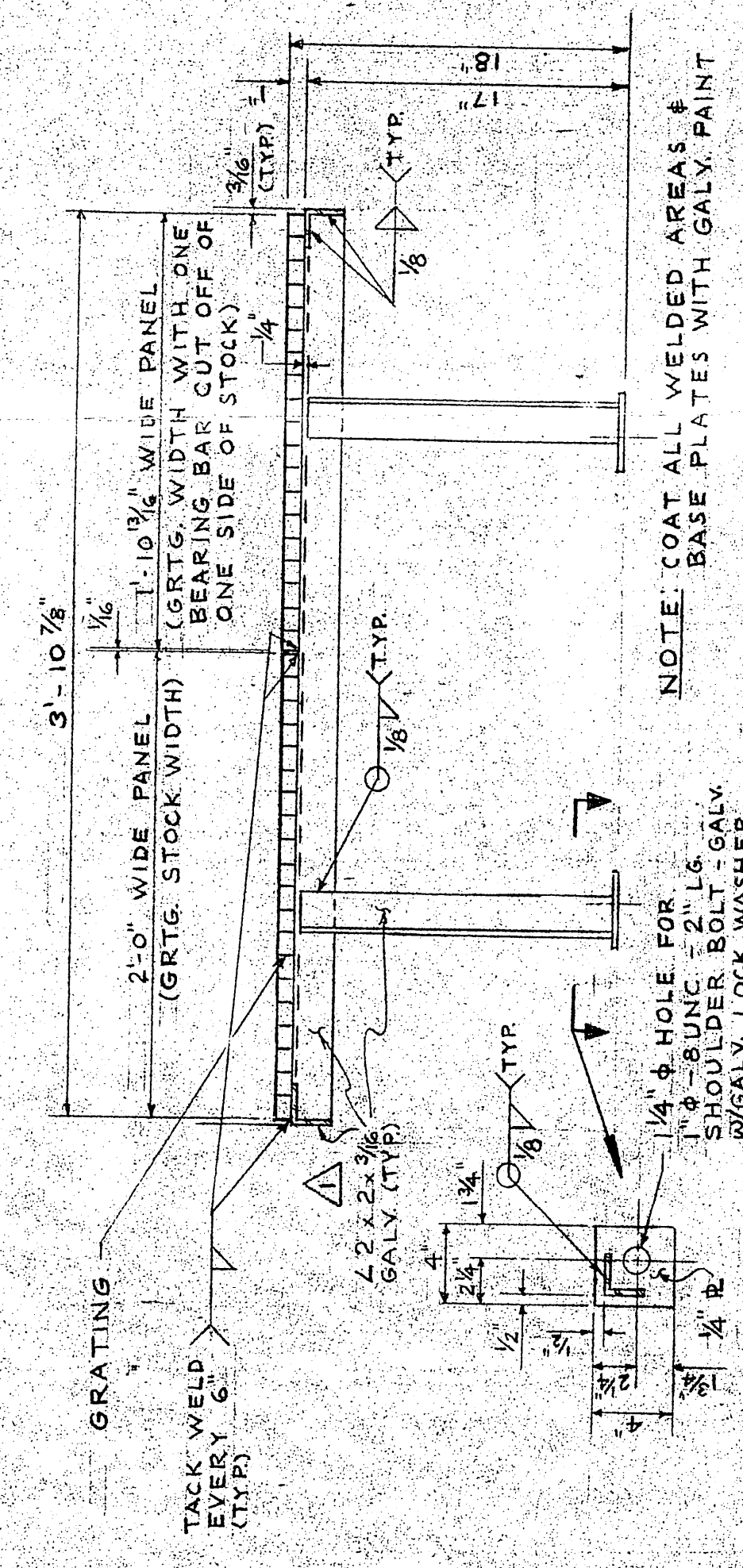


BILL OF MATERIAL

PC. NO.	QUAN. (1 SHIP)	DESCRIPTION	COST	ITEM P.O. NO.	VENDOR	DATE REC'D
1	1500'	GRATING, GALV. BORDEN TYPE W/B SIZE #4 IN 2 X 2' SECTIONS	545		STANDARD SUPPLY	
2	2400 LB	2 1/2 X 2 3/8 GALV. STL.				
3	42'	1/4" R. STL.				
4	374	SHOULDER BOLT 1" B UNC 2 L.G. GALV. STL.				
5	374	1" LOCK WASHER, GALV. STL.				



NOTE: COAT ALL WELDED AREAS & BASE PLATES WITH GALV. PAINT

1/4" HOLE FOR 1" B UNC 2 L.G. SHOULDER BOLT - GALV. W/ GALV. LOCK WASHER

2 1/2 X 2 3/8 GALV. STL.

1/4" R. STL.

1" LOCK WASHER, GALV. STL.

SHOULDER BOLT 1" B UNC 2 L.G. GALV. STL.

2 1/2 X 2 3/8 GALV. STL.

REV.	DESCRIPTION	DATE	BY
1	SECT. '4-A' CORRECTED L. SIZE TO 2 1/2 X 2 3/8	7/19/53	CJR

APPROVALS
 USCG
 USPHS
 FCC

U.S. NAVAL SHIP SYSTEMS COMMAND
 OCEANOGRAPHIC RESEARCH SHIP
 AGOR (UTILITY) CLASS
 WASHINGTON D.C. 20380

HALTER MARINE SERVICES, INC. 00071
 P.O. BOX 29266 NEW ORLEANS, LA. 70159

PORTABLE GRATING UNITS
 FOR MAIN DECK HOLD DOWNS

SCALE: 1/2" = 1'-0"
 DATE: 9-12-73
 DRAWN BY: C.J.R.
 CHECKED BY: E.J.R.
 HALTER 2187-2188 S-24
 HULL NO. 375-376 JOB NO.
 SHIPS NO. AGOR 21-520-002 REV. 1

1

2

3

4

5

UNIT WEIGHT = 182 #

4' x 4' GRATING UNIT

FOR DETAILS NOT SHOWN SEE PLAN '4-B'

6 REQ'D PER SHIP (96 #/SHIP)
 PLAN '1-B'

UNIT WEIGHT = 263 #

4' x 6' GRATING UNIT

FOR DETAILS NOT SHOWN SEE PLAN '4-B'

5 REQ'D PER SHIP (120 #/SHIP)
 PLAN '2-B'

UNIT WEIGHT = 425 #

4' x 10' GRATING UNIT

32 REQ'D PER SHIP (1280 #/SHIP)
 PLAN '4-B'

UNIT WEIGHT = 425 #

4' x 10' GRATING UNIT

32 REQ'D PER SHIP (1280 #/SHIP)
 PLAN '4-B'

UNIT WEIGHT = 182 #

4' x 4' GRATING UNIT

FOR DETAILS NOT SHOWN SEE PLAN '4-B'

6 REQ'D PER SHIP (96 #/SHIP)
 PLAN '1-B'

UNIT WEIGHT = 263 #

4' x 6' GRATING UNIT

FOR DETAILS NOT SHOWN SEE PLAN '4-B'

5 REQ'D PER SHIP (120 #/SHIP)
 PLAN '2-B'

UNIT WEIGHT = 425 #

4' x 10' GRATING UNIT

32 REQ'D PER SHIP (1280 #/SHIP)
 PLAN '4-B'

UNIT WEIGHT = 182 #

4' x 4' GRATING UNIT

FOR DETAILS NOT SHOWN SEE PLAN '4-B'

6 REQ'D PER SHIP (96 #/SHIP)
 PLAN '1-B'

UNIT WEIGHT = 263 #

4' x 6' GRATING UNIT

FOR DETAILS NOT SHOWN SEE PLAN '4-B'

5 REQ'D PER SHIP (120 #/SHIP)
 PLAN '2-B'

UNIT WEIGHT = 425 #

4' x 10' GRATING UNIT

32 REQ'D PER SHIP (1280 #/SHIP)
 PLAN '4-B'

UNIT WEIGHT = 182 #

4' x 4' GRATING UNIT

FOR DETAILS NOT SHOWN SEE PLAN '4-B'

6 REQ'D PER SHIP (96 #/SHIP)
 PLAN '1-B'

UNIT WEIGHT = 263 #

4' x 6' GRATING UNIT

FOR DETAILS NOT SHOWN SEE PLAN '4-B'

5 REQ'D PER SHIP (120 #/SHIP)
 PLAN '2-B'

UNIT WEIGHT = 425 #

4' x 10' GRATING UNIT

32 REQ'D PER SHIP (1280 #/SHIP)
 PLAN '4-B'

UNIT WEIGHT = 182 #

4' x 4' GRATING UNIT

FOR DETAILS NOT SHOWN SEE PLAN '4-B'

6 REQ'D PER SHIP (96 #/SHIP)
 PLAN '1-B'

UNIT WEIGHT = 263 #

4' x 6' GRATING UNIT

FOR DETAILS NOT SHOWN SEE PLAN '4-B'

5 REQ'D PER SHIP (120 #/SHIP)
 PLAN '2-B'

UNIT WEIGHT = 425 #

4' x 10' GRATING UNIT

32 REQ'D PER SHIP (1280 #/SHIP)
 PLAN '4-B'

UNIT WEIGHT = 182 #

4' x 4' GRATING UNIT

FOR DETAILS NOT SHOWN SEE PLAN '4-B'

6 REQ'D PER SHIP (96 #/SHIP)
 PLAN '1-B'

UNIT WEIGHT = 263 #

4' x 6' GRATING UNIT

FOR DETAILS NOT SHOWN SEE PLAN '4-B'

5 REQ'D PER SHIP (120 #/SHIP)
 PLAN '2-B'

UNIT WEIGHT = 425 #

4' x 10' GRATING UNIT

32 REQ'D PER SHIP (1280 #/SHIP)
 PLAN '4-B'

UNIT WEIGHT = 182 #

4' x 4' GRATING UNIT

FOR DETAILS NOT SHOWN SEE PLAN '4-B'

6 REQ'D PER SHIP (96 #/SHIP)
 PLAN '1-B'

UNIT WEIGHT = 263 #

4' x 6' GRATING UNIT

FOR DETAILS NOT SHOWN SEE PLAN '4-B'

5 REQ'D PER SHIP (120 #/SHIP)
 PLAN '2-B'

UNIT WEIGHT = 425 #

4' x 10' GRATING UNIT

32 REQ'D PER SHIP (1280 #/SHIP)
 PLAN '4-B'

UNIT WEIGHT = 182 #

4' x 4' GRATING UNIT

FOR DETAILS NOT SHOWN SEE PLAN '4-B'

6 REQ'D PER SHIP (96 #/SHIP)
 PLAN '1-B'

UNIT WEIGHT = 263 #

4' x 6' GRATING UNIT

FOR DETAILS NOT SHOWN SEE PLAN '4-B'

5 REQ'D PER SHIP (120 #/SHIP)
 PLAN '2-B'

UNIT WEIGHT = 425 #

4' x 10' GRATING UNIT

32 REQ'D PER SHIP (1280 #/SHIP)
 PLAN '4-B'

OFFICE COPY